



RTK-Pro

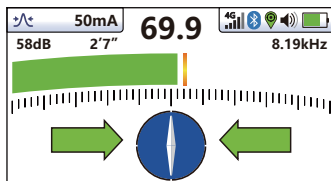
Utility Locator with Survey-Grade GNSS

- Fully-integrated RTK GNSS
- One-hand locating and mapping
- Cloud-based data management
- Survey-grade GNSS accuracy
- Simplistic locating modes
- Reduces excess field equipment

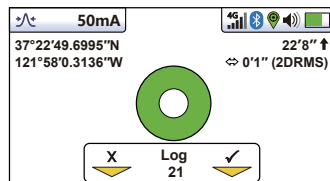
The **vLoc3 RTK-Pro receiver** is the first to add RTK GNSS accuracy to a utility locator. Using the RTK-Pro internal cellular module with 4G LTE capabilities, the operator has the ability to connect to NTRIP RTK (Real-Time Kinematic) caster that provides RTCM 3 corrections. By utilizing these corrections, the operator can collect both utility location data along with the geographical location of the utility with survey-grade accuracy.

The RTK-Pro is designed for all operator levels, utilizing user-friendly and intuitive locate screens. Operators simply confirm the utility data with the press of a button and align the electronic spirit level to store the data. All field data is sent to the cloud and retained in the receiver's on board storage for review and exporting to external mapping programs.

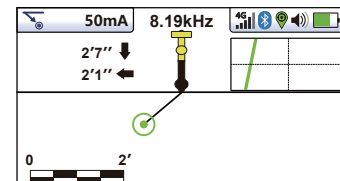
The user-configurable vLoc3 series receivers contain eight passive locate modes, fault find mode, and a range of configurable frequencies from 98Hz to 200 kHz. Visual and mechanical vibration alerts can also be configured by the user providing warnings for shallow depth, overload, overhead cables, and excessive swinging. Optional features include Tx-Link that enables the user to change the frequencies of the transmitter, power output and operate most of the features of the transmitter remotely.



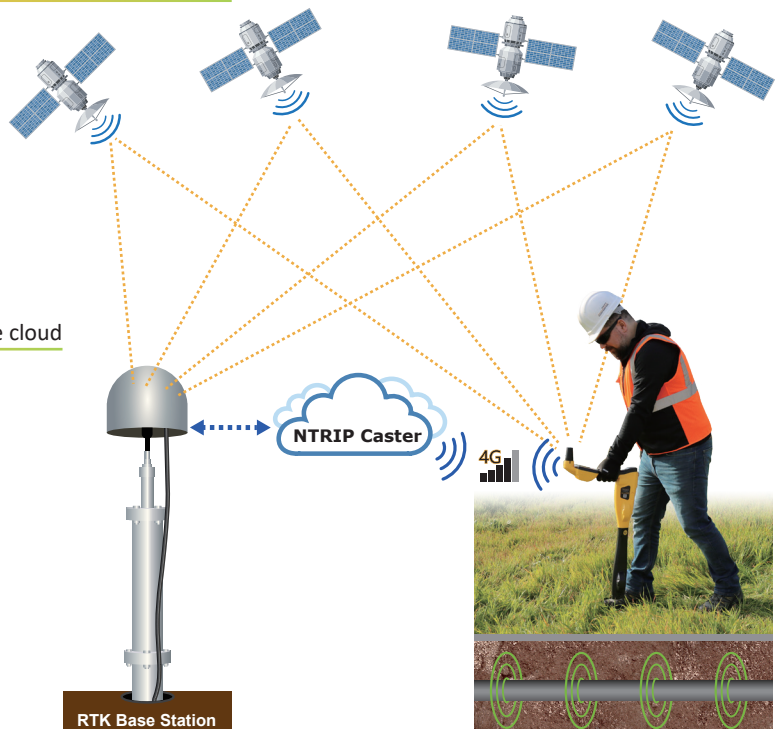
Classic Screen - bar graph indicator with the addition of three color-coded distortion levels. Peak, Null, Simultaneous Peak with Arrows, Omni Peak locating modes.



All relevant utility data is directly sent to the cloud along with RTK position of the utility.



Vector Screen for use when access directly over the utility is not possible. Using two sets of omni directional antennas the utility offset and depth are displayed.



	vLoc3 RTK-Pro Receiver Specifications	
Display	High-Visibility Color Display 4.3"/10cm with 480 x 272 resolution	
Battery life	Lithium-ion – 16 hours of continuous use	
Operating frequencies	Configurable frequencies from 98Hz to 200kHz Power - 50Hz and 60Hz Radio - 10kHz - 22.7kHz bandwidth	
Locate Perspectives	<ul style="list-style-type: none"> - Classic Screen with bar graph indicator with Peak, Null, Simultaneous Peak with Arrows, and Omni Peak - Vector Screen for when access directly over the utility is not possible, the locator offset and depth are displayed - Plan View displays the theoretical line in 2D from above ground in omnidirectional mode - Transverse Graph is used to analyze the shape of the fields - Sonde Screen guides you directly to the sonde with minimal control adjustment 	
Data logging and transfer	<ul style="list-style-type: none"> - Real-time upload connection to the VMMap server via cellular connection - Run analysis from VMMap web portal to determine best practices - Export data in .csv, .klm, .shp, .txt, .xls or .xlsx file formats 	
GNSS Features	<ul style="list-style-type: none"> - Satellite Tracked: - GPS/QZSS, GLONASS, Galileo, BeiDou - GPS L1C/A L2C, GLO L1OF L2OF, GAL E1B/C E5b, BDS B1I B2I, QZSS L1C/A L2C - Position accuracy RTK 0.01 m + 1 ppm CEP - Convergence time RTK < 10 sec - Acquisition: Cold starts = 24s, Reacquisition = 2s - Dependent on atmospheric conditions, baseline length, GNSS antenna, multipath conditions, satellite visibility, and geometry 	
NTRIP	<ul style="list-style-type: none"> - Compatible with Casters with RTCM3 output messages - Real time reference station connection status displayed on the receiver - Real time horizontal accuracy in 2DRMS 	
Cellular Connection	<ul style="list-style-type: none"> - 4G with 3G fallback - LTE FDD bands 2, 4, 5, 7, 17 - UMTS/HSPA [MHz] 850, 900, 1700, 1900, 2100 	
Weight	- 5.5 lbs. / 2.4kg.	
Environmental	- IP65 and NEMA 4	What's in the Box:
Dimensions		<ul style="list-style-type: none"> - Custom Li-ion battery with charger - Alkaline battery pack - Mini USB lead - User manual - Soft shell hard carry case 

Local Vivax-Metrotech Distributor:



Utility Tools for Today!

**3792 South Lipan Street
Englewood, Colorado 80110**

Telephone: (303) 762-1070 or 1-800-373-3212
FAX: (303) 762-0996 www.intermntnsales.com

Vivax-Metrotech Corporation

3251 Olcott Street, Santa Clara, CA 95054, USA

T/Free: 1-800-446-3392

Tel: +1-408-734-1400

www.vivax-metrotech.com

CONNECT WITH US ON SOCIAL MEDIA



V1.3